

HOUSE & LAND

retreat
RANGE

A NEW PLACE TO CALL HOME



ALLEGRA 193

\$1,288,500*



TOTAL (sqgs)	20.81
TOTAL (m ²)	193.29
WIDTH (m)	11.91
LENGTH (m)	19.16

**LOT 250 FIG CRES, EDGEWORTH NSW
2285**

LAND: 948 m²

Features & Inclusions:

20mm Stone Benchtops

Colorbond Roof

Ducted A/C & Heating

Fixed Price Contracts

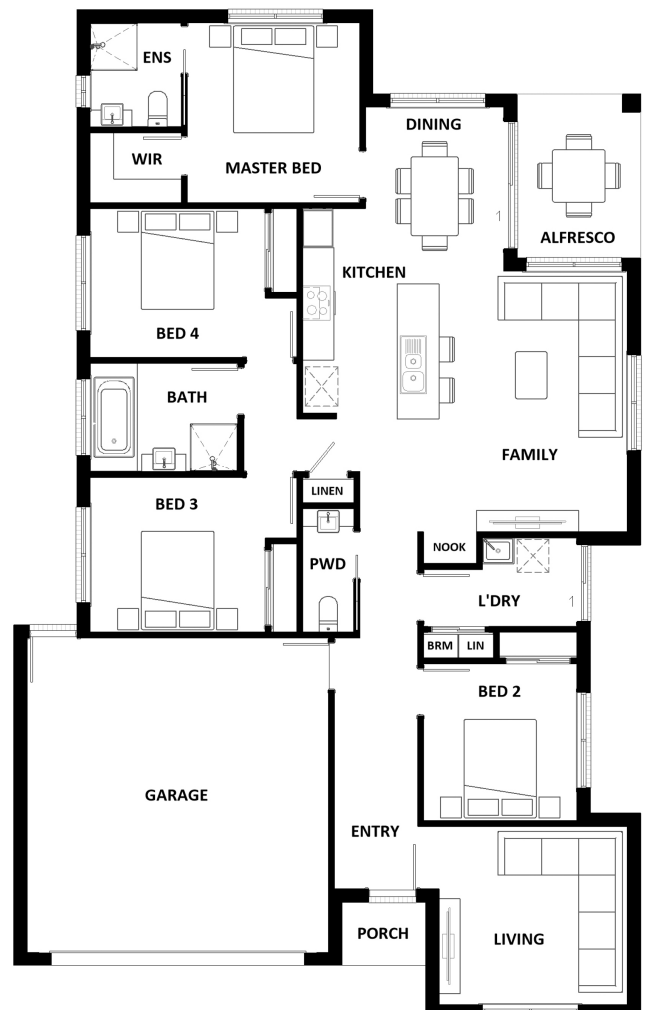
Local builder/Local trades

Timber Laminate flooring and carpet

For more information contact:

Maddison Elsley 02 4081 8373

Builder Licence: 454037C



*Dimensions, photographs, floor plans and facade images are approximate and for illustrative purposes only. They are not drawn to scale. The dimensions provided of "width" and "length" are the actual dimensions of the completed house including alfresco areas (where applicable). It is the home owner's responsibility to ensure that all applicable council regulations and estate requirements are met. Structural, design or material changes may be required to ensure the design complies with relevant council, planning, zoning and/or engineering standards or to comply with specific land characteristics or developer requirements. Final design and construction are contingent upon site-specific assessments and approval by relevant authorities. Subject to land availability, pricing and site costs unless advertised as a 'fixed price package'. Driveway size based on builder's preferred siting. Check with your local builder for builder's standard range and inclusions. Photographs may include optional features or items that are not supplied by Hotondo Homes. Hotondo Homes reserves the right to change plans, specifications, materials and suppliers without notice. For more information visit your local builder or <https://hotondo.com.au>.